



Burning Studies to CD, DVD, or USB From SHOWCASE® With an Onboard Viewer

Windows Integrated CD/DVD Writing

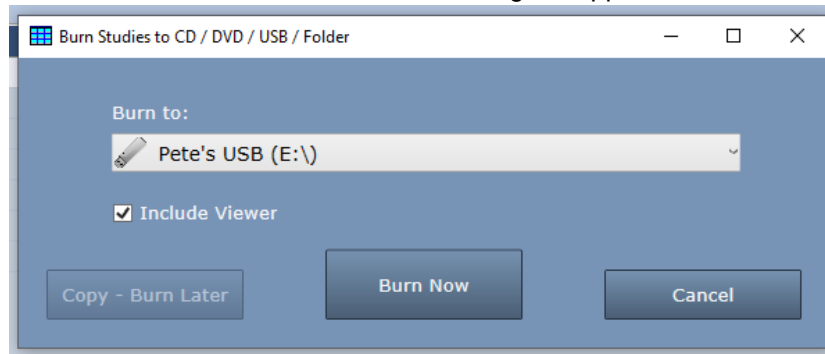
If you are burning studies to CD or DVD, please make sure Windows Integrated CD/DVD Writing is turned on. A quick way to check this is to place a blank CD in your burning drive and trying burning some files to it from Windows File Explorer. If you can do this, then you're ready to burn to CD and DVD.

A Note on USB 'Burning'

USB 'burning' does not require Windows Integrated burning. 'Burning' to a USB does not 'burn' the USB drive, as with a CD or DVD, it copies the studies to USB with the OnBoard viewer so you can plug it into another computer and run the onboard viewer to view the studies 'burned' to the USB.

Burning to CD/DVD/USB

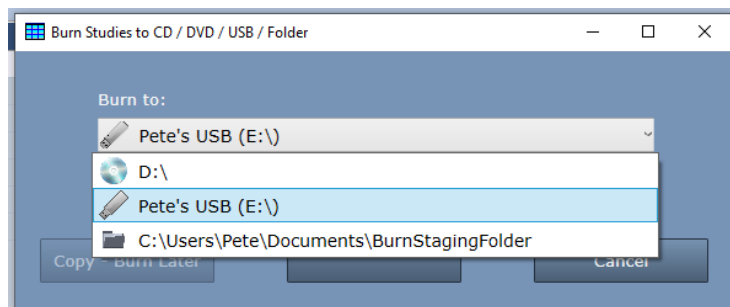
1. Insert the CD, DVD, or USB stick into your computer
2. Go to the Study Lists window and select the studies you want to burn
3. Press the Burn button near the bottom of the screen. A dialog will appear



4. Select your destination (if it's not already selected) and click "Burn Now"
5. A series of progress dialogs will appear as your studies burn to your destination media.

Note: Do not add studies to a CD or DVD that already has studies burned onto it, as the results will be unpredictable. Always use a new empty CD or DVD. This limitation does not apply to USB.

Burn Destinations



ShowCase can burn to CDs, DVDs, USBs, or a staging folder, which can then be copied using other means onto removable media. Clicking on the dropdown in the Burn Studies dialog allows you to select which destination you're burning to. ShowCase will remember your chosen destination after you exit, for your convenience.

Changing the Staging Folder

To change your staging folder, select the folder as your destination. A “Change Folder” button will appear. Click that button and select a new folder. ShowCase will remember that folder from now on.

Copy – Burn Later

This button is only available when you've selected a CD or DVD as your destination. It allows you to queue up multiple studies for burning to CD/DVD later. To use this feature:

1. Select a study.
2. Click Burn
3. Click Copy – Burn Later -> You will see progress dialogs staging your burn and the dialog will close
4. Go back to the Study List and repeat until you've queued up all the studies you want to burn.
5. To burn the studies, click the C: Burn tab in ShowCase and click Burn

You can check which studies are queued up for later burning by clicking on the C: Burn tab in ShowCase.

Will My Studies Fit on the CD/DVD?

If you click on the Burn tab in ShowCase, you will see a message of “Folder contains NNN MB” just under the tab, telling you how much space your studies will take up on the disk. By comparing this against the capacity of your CD or DVD you can tell if it will fit.

Troubleshooting

The Burn button is missing from my Study List

If you do not have a “Burn” button on your Study Lists Window, then you are running either ShowCase Basic or ShowCase Onboard. Only ShowCase Premier includes the CD/DVD/USB burning feature. You will need to upgrade to ShowCase Premier if you want to use this feature.

I don't see my CD or DVD drive as a destination option in the Burn dialog

Make sure Windows Integrated CD/DVD writing is turned on. A quick way to check this is to place a blank CD in your burning drive and trying burning some files to it from Windows File Explorer. If you can do this, then you're ready to burn to CD and DVD.

When I try to burn to USB, I get a dialog saying something about an upgrade feature?

This means you purchased your ShowCase product before release 6.1 and you do not have an active support plan that entitles you to his upgrade. Please contact support@triltech.com to reactivate your support plan.

SHOWCASE® is a registered trademark of Trillium Technology, Inc.